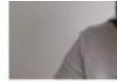


Monday 21<sup>st</sup> June 2021

LC: Can I generate vocabulary for the opening?

**Writing warm up:** Match the **adjectives** to the **nouns** they're describing



An **adjective** describes a word; it tells us what it's like

A **noun** is a P,P,T: a person, place or thing



towering	shadows
dark	bark
overgrown	trees
faint	roots
rough	sunlight

Write down what the woods look like



True or false?

1. There is speech in the opening. \_\_\_\_\_
2. The jabberwocky is talking. \_\_\_\_\_
3. The jabberwocky is a dangerous creature. \_\_\_\_\_

Write down your ideas about what the jabberwocky might look like.



Imagine you're the father; write down what you would say to your son.

---

---